

MPS Catalog Number:

S1 40 90 025 MA AL 015

Date:

01/23/2014

END FITTINGS

Tower End Fitting:

Y-Clevis (Forged Steel)

Line End Fitting:

Eye (Forged Steel)

MATERIAL

Corona Ring (Tower):

None

Corona Ring (Line):

8" Corona Ring

Corona Rings are recommended for applications of 230 kV and above

Number of Sheds:

7 large 8 standard

Rod Diameter:

16 mm

Weight Estimate:

9.8 lbs 4.5 kg

DIMENSIONAL VALUES

Section Length (L):

37.8 in 960 mm

Rubber Length (X):

24.5 in 622 mm

Standard Shed Height (P1):

1.5 in 38 mm

Large Shed Height (P2):

2 in 51 mm

Projection Ratio (S/P):

- 1.5

Shed Spacing (S):

3 in 76 mm

Dry Arc Distance:

24.2 in 615 mm

Leakage Distance:

66.9 in 1,699 mm

ELECTRICAL VALUES

60 Hz Dry Flashover:

245 kV Min. Withstand: 228 kV

60 Hz Wet Flashover:

220 kV Min. Withstand: 192 kV

Pos. Critical Impulse Flashover:

425 kV Min. Withstand: 366 kV

Neg. Critical Impulse Flashover:

458 kV Min. Withstand: 407 kV

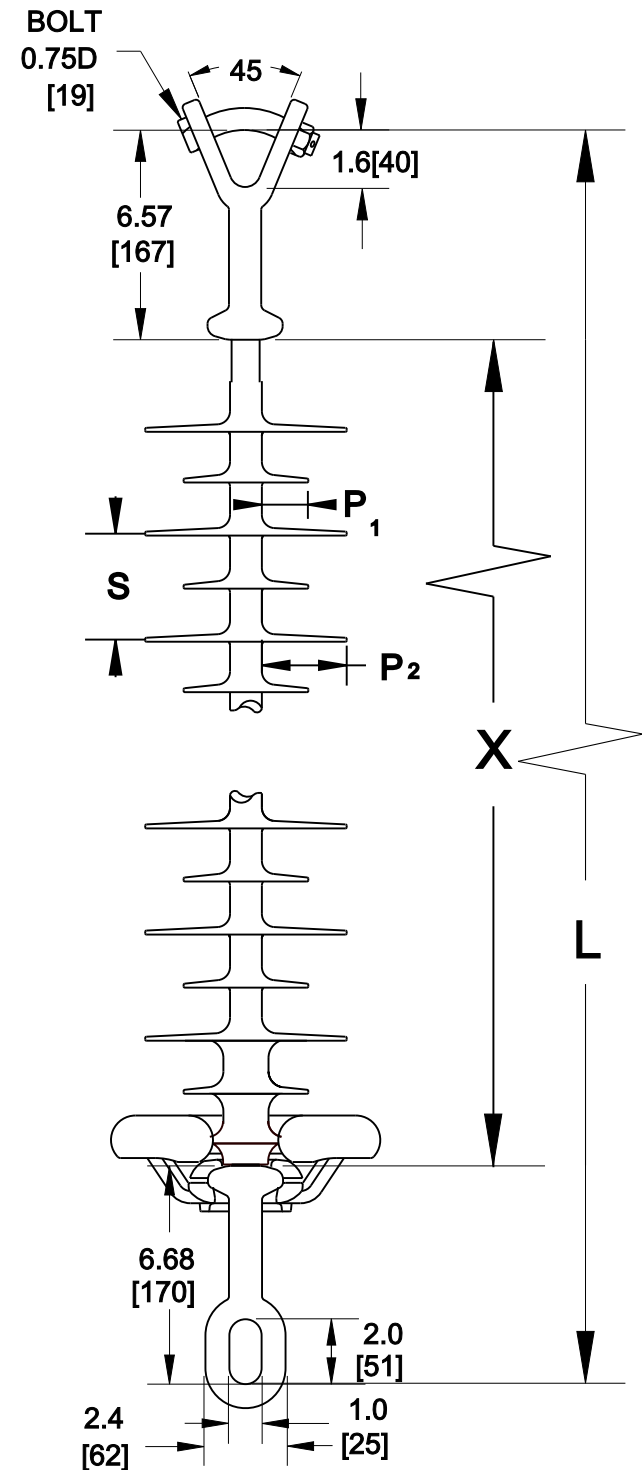
MECHANICAL VALUES

Specified Mech. Load (SML):

25,000 lbs 111.2 kN

Routine Test Load (RTL):

12,500 lbs 55.6 kN



Dimensions: inches [millimeters]

Note: Drawing not actual depiction of insulator appearance

Silicone Rubber Sheath & Sheds
Complies with applicable ANSI and IEC standards.